

**7,623 acres within St. Charles Parish, owned by U.S. Army Corps of Engineers BUILDING STRONG ®**

**Permits**  
A 2022-2023 Bonnet Carré Spillway Hunting Permit is required for all persons regardless of age. Permits must be signed prior to hunting any game and must be carried at all times while in the field. Your hunting permit acknowledges your understanding of area regulations. The cut-out on the cover of this brochure is your annual permit. All persons 16 years or older are required to have a photo identification while in the field.

**GENERAL REGULATIONS**  
Hunting regulations are designed to protect visitors as well as ensure continued wildlife populations. The regulations below govern hunting on Bonnet Carré Spillway, under the authority vested by Code of Federal Regulations Title 36 part 327. Hunting will be in accordance with applicable State and Federal regulations subject to the following conditions.



**Firearms**  
St. Charles Parish ordinances prohibit bodily possession of, or discharge of any rifle, pistol or weapon discharging ball ammunition within the boundaries of the Bonnet Carré Spillway Project. Ball ammunition is defined as a single lead and/or metal projectile, including all rifles, muzzloaders, shotgun slugs, BB guns, and pellet rifles. Parish ordinances also prohibit the bodily possession of a loaded shotgun or the discharge of any shotgun within 800 feet of the Bonnet Carré Spillway levees from the Mississippi River to Lake Pontchartrain, U.S. Hwy 61 (Airline Highway), and St. Charles Parish Highway 12 (Spillway Road)  
The possession of firearms, ammunition, loaded projectile firing devices, bows and arrows, crossbows, or other weapons are prohibited except during designated area hunts. Hunters must have firearms unloaded at all times while traveling within the area by motor vehicle, ATV, horse, bicycle and while in a vessel under mechanical power. Loaded weapons are not allowed within 100 feet of designated ATV trails, foot trails, and roads; or within 100 yards of designated parking areas. Loaded vehicles must display a total of 400 square inches of "Hunter Orange" and wear a "Hunter Orange" cap during the open gun hunt for deer. Hunter orange must be worn the entire time while in the field. All persons afield during all other hunting seasons are encouraged to wear "Hunter Orange." Deer hunters and in the ready position, or caps on muzzleloader.



**Motorized vehicles and All Terrain Vehicles**  
All motorized vehicles, including automobiles, ATVs and motorcycles are restricted to designated roads and trails. ATVs must be operated under a valid permit from Spillway Office, be brought in to the area by vehicle or trailer. Off loaded in parking areas and may only be operated on designated trails. Vehicles must park in designated parking areas. Blocking gates or roads with a vehicle or ATV is prohibited. ATVs are not allowed off designated trails, NO EXCEPTIONS! Designated trails are open from 5:00 a.m. until two hours after sunset.  
**SPECIFIC HUNTING REGULATIONS**  
State bag limits apply unless otherwise specified. The State of Louisiana is permitted except in designated closed hunting seasons are those listed in this brochure. Areas as indicated on the area map. All hunting shall be still-hunting, except as otherwise specified. Migratory bird and waterfowl hunting same as outside seasons. Shotgun use only. Hunting waterfowl after 12 p.m. (noon) prohibited. During shotgun deer season, use of dogs allowed for waterfowl hunting only.  
Archery season is either-sex EXCEPT during bucks-only seasons.

All users EXCEPT waterfowl hunters must display a total of 400 square inches of "Hunter Orange" and wear a "Hunter Orange" cap during the open gun hunt for deer. Hunter orange must be worn the entire time while in the field.



wear a "Hunter Orange" cap. They must also display a minimum of 400 square inches of "Hunter Orange" above or around their blinds which is visible from 360 degrees.  
Beaver, hogs, nutria, armadillos, and coyote may be taken incidental to any area hunt with weapons legal for that hunt.

Deer dogs and hog dogs prohibited year round. Waterfowl hunting after 12 p.m. is prohibited. Only portable stands and blinds may be used. Deer stands and blinds must be removed from the property at the end of each day.

**2022-2023 Season Dates  
ALL HUNTING SHALL BE STILL HUNTING ONLY  
(EXCEPT as otherwise specified)**

Type	Season Dates	Specific Regulation
Deer-Archery	Oct. 1–15	Bucks only
Deer-Archery	Oct. 16–Feb. 15	Either-sex (EXCEPT during bucks only seasons)
Deer-Gun (Youth)	Oct. 29-30	Either sex Additional permit required from Spillway office.
Deer-Shotgun	Nov. 25-27	Either sex
Deer-Shotgun	Dec. 17-Jan. 1	Bucks only
<b>Small Game, Migratory Game Birds and Waterfowl</b>	Same as outside	Shotgun only Hunting waterfowl after 12 p.m. (noon) prohibited. During shotgun deer season, use of dogs allowed for waterfowl hunting only.
<b>Squirrel and Rabbit</b>	Same as outside	EXCEPT hunting with dogs not allowed north of U.S. 61 during shotgun season for deer Nov. 25-27 and Dec. 17–Jan. 1
<b>Armadillos, Beavers, Hogs, Nutria, Coyotes, and Starlings</b>	May be taken incidental to any spillway hunt	With weapons legal for that hunt Example: Use of shotgun during shotgun season only. Feral hogs: May be taken during daylight hours by properly licensed and permitted hunters incidental to deer archery and deer shotgun (buckshot) seasons only.

**ADDITIONAL PERMIT REQUIRED AND POSTED RESTRICTIONS APPLY FOR ALL PERSONS REGARDLESS OF AGE**  
Permits must be signed prior to hunting any game and must be carried at all times while in the field. For permits or more information, see bulletin boards on-site, visit the project website at [www.mvn.usace.army.mil/recreation/](http://www.mvn.usace.army.mil/recreation/) (then click on Bonnet Carré Spillway), or contact the U.S. Army Corps of Engineers, Bonnet Carré Spillway Project Office at (985) 764-7484 for more information.

**YOUTH HUNTERS**  
Youths participating in youth hunts must possess a hunter safety certification or proof of successful completion of a hunter safety course. Each youth must be accompanied by one adult 18 years of age or older. If the accompanying adult is in possession of a hunter safety certification, a valid hunting license or proof of successful completion of a hunter safety course, this requirement is waived for the youth. Adults may not possess a firearm. Youths may possess only one firearm while hunting. The supervising adult shall maintain visual and voice contact with the youth at all times. An adult may supervise only one youth during these special hunt.

**THE FOLLOWING ACTIVITIES ARE  
PROHIBITED AT THE  
BONNET CARRÉ SPILLWAY:**

- The use or possession of alcoholic beverages while in motor vehicles or in possession of firearms
- Camping/overnight parking (except in designated St. Charles Parish camping areas in accordance with approved permit)
- Overnight mooring of houseboats
- Use of airboats
- Target practice and skeet shooting
- Spot-lighting
- Climbing trees to hunt by driving nails, spikes or other metal objects
- Using a tree that has existing nails, spikes or metal objects
- Use or possession of any type of trailmarkers (paint, flagging, bright eyes, etc.)
- Moving deer or hogs with organized drivers, standers and/or noise-making devices
- Unattended decoys in the field or on the water
- Construction or hunting from a permanent stand or blind
- Leaving tree stands and/or hunting blinds on spillway property overnight
- Baiting or the possession of bait, salt or ingestible attractant while on the project at anytime
- Feeding wildlife including alligators
- Use of ATVs outside of ATV area without permit

**WELCOME TO BONNET CARRÉ SPILLWAY**

The U.S. Army Corps of Engineers, New Orleans District welcomes you to the Bonnet Carré Spillway area located in southeastern Louisiana. The Bonnet Carré Spillway Area was established in 1928 as a flood damage risk reduction project along the lower Mississippi River. The spillway is located in St. Charles Parish and is situated between New Orleans and Baton Rouge, between the Mississippi River and Lake Pontchartrain. When the project is not in operation, the 7,623 acre area is open to public access and outdoor recreation. Bonnet Carré Spillway offers excellent small game hunting including squirrel, rabbit, woodcock, snipe and mourning dove, as well as opportunities to hunt waterfowl and white-tailed deer.

It is your responsibility to know the hunting seasons and regulations. Please read through this hunting pamphlet prior to hunting for your safety and the safety of the other project visitors. Project boundaries and no hunting areas are depicted on the enclosed map.  
Hunter participation and wildlife harvest data are vital to the successful management of wildlife resources. Complete and accurate harvest information will aid in future management decisions. In order to provide harvest data please contact the Spillway Project Office. Volunteers are needed on the project. If you are interested in volunteering, please stop by or contact the Spillway Project Office for more information.

**CONTACT INFORMATION**

U.S. Army Corps of Engineers:  
Bonnet Carré Spillway Project Office  
(985)764-7484  
16302 River Road, Norco, LA 70079  
<https://www.mvn.usace.army.mil/Missions/Recreation/Bonnet-Carre-Spillway/>  
**Like us on Facebook:**  
<https://www.facebook.com/#!/pages/Bonnet-Carre-Spillway/192125074330471>  
**St. Charles Parish Sheriff's Office:**  
(985)783-6807 (non-emergency) or 911(emergency)  
**LA Department of Wildlife and Fisheries:**  
(225)765-2800 [www.wlf.louisiana.gov](http://www.wlf.louisiana.gov)  
Operation Game Thief (800)442-2511  
**MVN PAM 360-1-28, May 2022 (supersedes all previous pamphlets)**



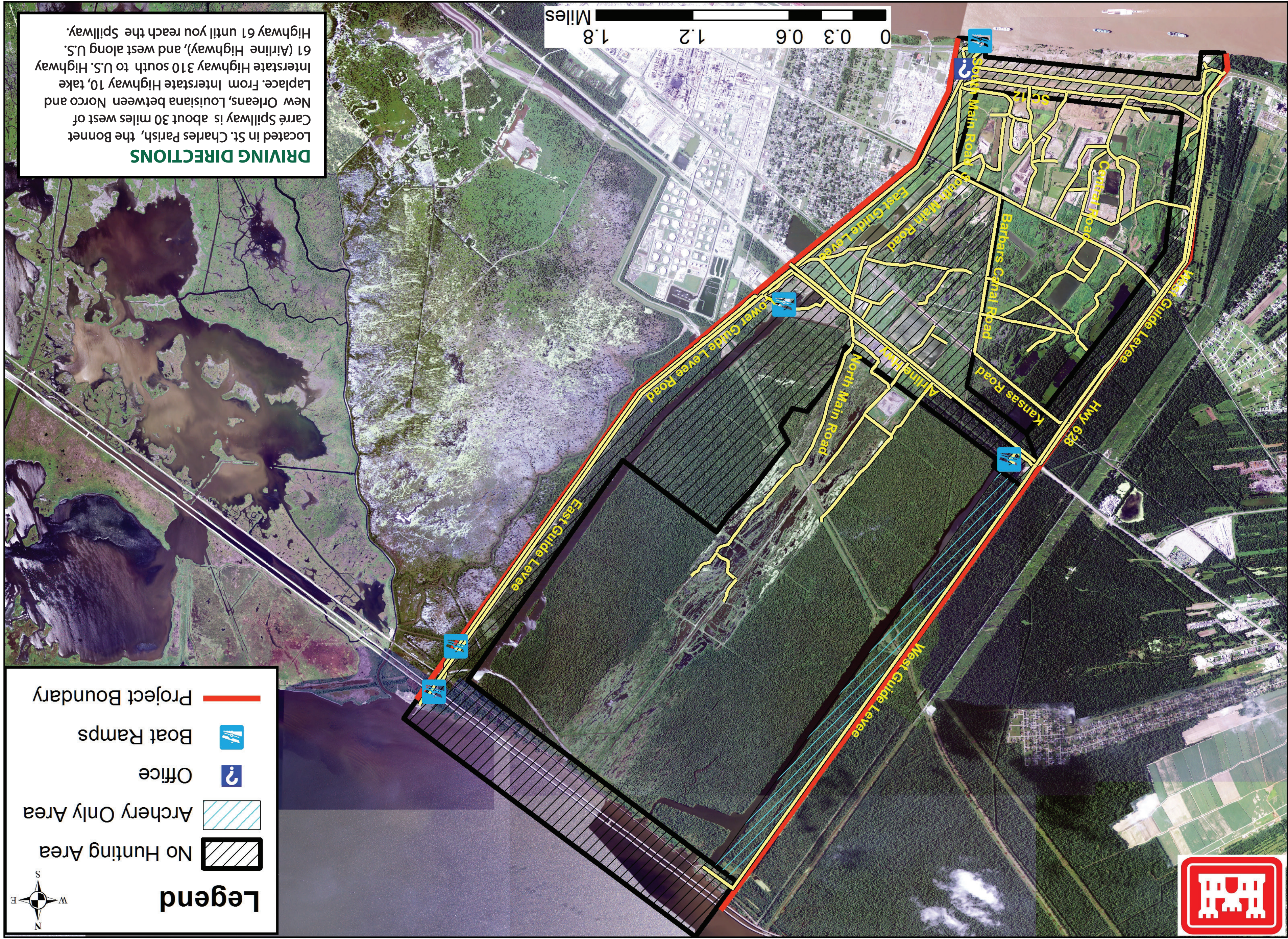
**2022-2023 Bonnet Carré Spillway  
Hunting Permit**

I have read, and understand the regulations governing the U.S. Army Corps of Engineers, Bonnet Carré Spillway. I hereby forever release and hold harmless the United States of America from all liability due to death, injury, or damages arising from the exercise of this hunting permit and will indemnify and save harmless the United States of America from any and all costs, damages, settlements, or judgments arising from death, injury or damage to persons or property arising from the exercise of this hunting permit..

Signature (Permits are not transferable)  
Valid only when signed.



# Bonnet Carre' Hunting Map



## DRIVING DIRECTIONS

Located in St. Charles Parish, the Bonnet Carre' Spillway is about 30 miles west of New Orleans, Louisiana between Norco and Laplace. From Interstate Highway 10, take Interstate Highway 310 south to U.S. Highway 61 (Airline Highway), and west along U.S. Highway 61 until you reach the Spillway.

